

Gillespie Park

a green oasis



Gillespie Park is a 2.8 hectare Local Nature Reserve in the heart of inner city London. The reserve is managed for the benefit of wildlife. An amazing 244 plant species, 94 bird species and 24 types of butterfly have been seen here.

Take a walk around the reserve and see what you can spot. Our ponds are alive with frogs, newts and dragonflies in the spring and summer. You may even be lucky enough to see a heron. The meadows look their best in summer when they are alive with colourful wildflowers and insects. The woodlands and hedgerows are great places to look for birds, such as goldfinches and long tailed tits, at any time of year. Nature conservation rangers are on hand for a chat about the wildlife in the area.

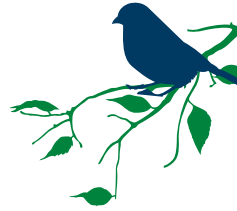


Get involved with practical nature conservation

Much of the work at Gillespie Park is carried out by a group of dedicated volunteers who meet every week and carry out tasks such as coppicing and looking after the wildlife garden. No experience is needed, all tools are provided and everyone is welcome. We also have opportunities for volunteers interested in other aspects of our work, such as education and events. The Friends of Gillespie Park are a community group who work to support Gillespie Park and the Ecology Centre. New members are always welcome.



Contact and travel Information



Getting there

Cycle Bike racks

Bus 4, 19, 236

Tube Arsenal, Finsbury Park

Train Finsbury Park, Drayton Park

Opening times

Gillespie Park is open daily from 8am to dusk, except on Arsenal home match days when both the reserve and the Ecology Centre are closed. The Ecology Centre is open from 10am to 4pm Monday to Friday. Weekend times of the Ecology Centre vary – contact us for more information.

Accessibility

The entrance to Gillespie Park via Drayton Park is sloped and leads to a level parking area. Limited onsite parking and priority given to Blue Badge holders. Parts of Gillespie Park have wide, accessible paths but paths to 'wild' areas are narrow and fairly steep with rough, uneven surfaces. The Ecology Centre is accessible for all with accessible toilets and an induction loop. For more detailed access information, please contact us.



If you would like this document in large print or Braille, audiotape or in another language, please call 020 7527 2000.

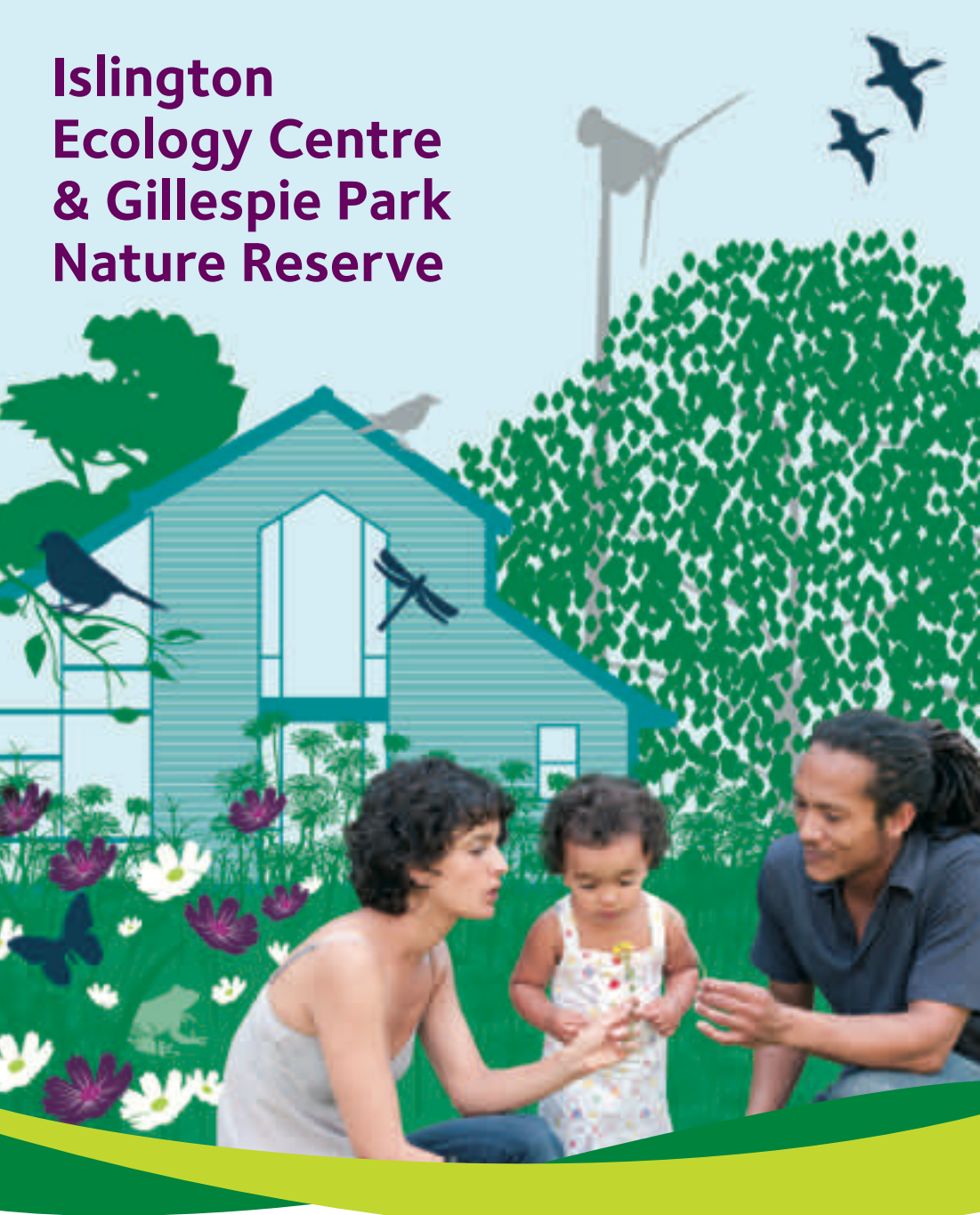
Islington Ecology Centre
Gillespie Park Local Nature Reserve
191 Drayton Park, London, N5 1PH

T 020 7527 4374

E ecologycentre@islington.gov.uk

W www.islington.gov.uk/sustainabilitycentres

Islington Ecology Centre & Gillespie Park Nature Reserve



Islington Ecology Centre

The Ecology Centre, set in the beautiful surroundings of Gillespie Park Local Nature Reserve, is a visitor and education centre. Visit to find out more about wildlife gardening and green living, to ask staff for advice and to check out the green features, including a wind turbine, green roof, solar thermal, sun pipes and wind catchers, eco kitchen, biomass boiler and more.



A great venue available for hire

The Ecology Centre is available for hire by businesses, community organisations and residents, for anything from conferences to children's parties. The building can accommodate 80 people for standing functions, 50 for lectures or 30 for seated functions.

Costs for 2009/10 and 2010/11

£21.85 per hour for individuals and non-profit organisations

£41.40 per hour for businesses

Discounts are available if you are booking for a whole day. Additional charges may apply if you wish to use the centre out of office hours.



Green events and courses

Islington's Sustainability Centres (the Green Living, Ecology and i-recycle centres) host a fantastic variety of events, family activities and adult courses in all aspects of sustainability such as organic gardening, recycled fashion, sustainable home improvements, encouraging wildlife and botany. Every year the Gillespie Festival attracts around 2,000 people in a community celebration which includes music, storytelling, environmental arts and more.

Pick up an events leaflet at the Ecology and Green Living centres.

Schools

The Ecology Centre offers an exciting, curriculum-linked education programme, open to schools from all boroughs. Pupils can enjoy a variety of stimulating, tailored sessions, designed to enthuse and engage young people with the natural world.

Contact us for a copy of our schools leaflet.



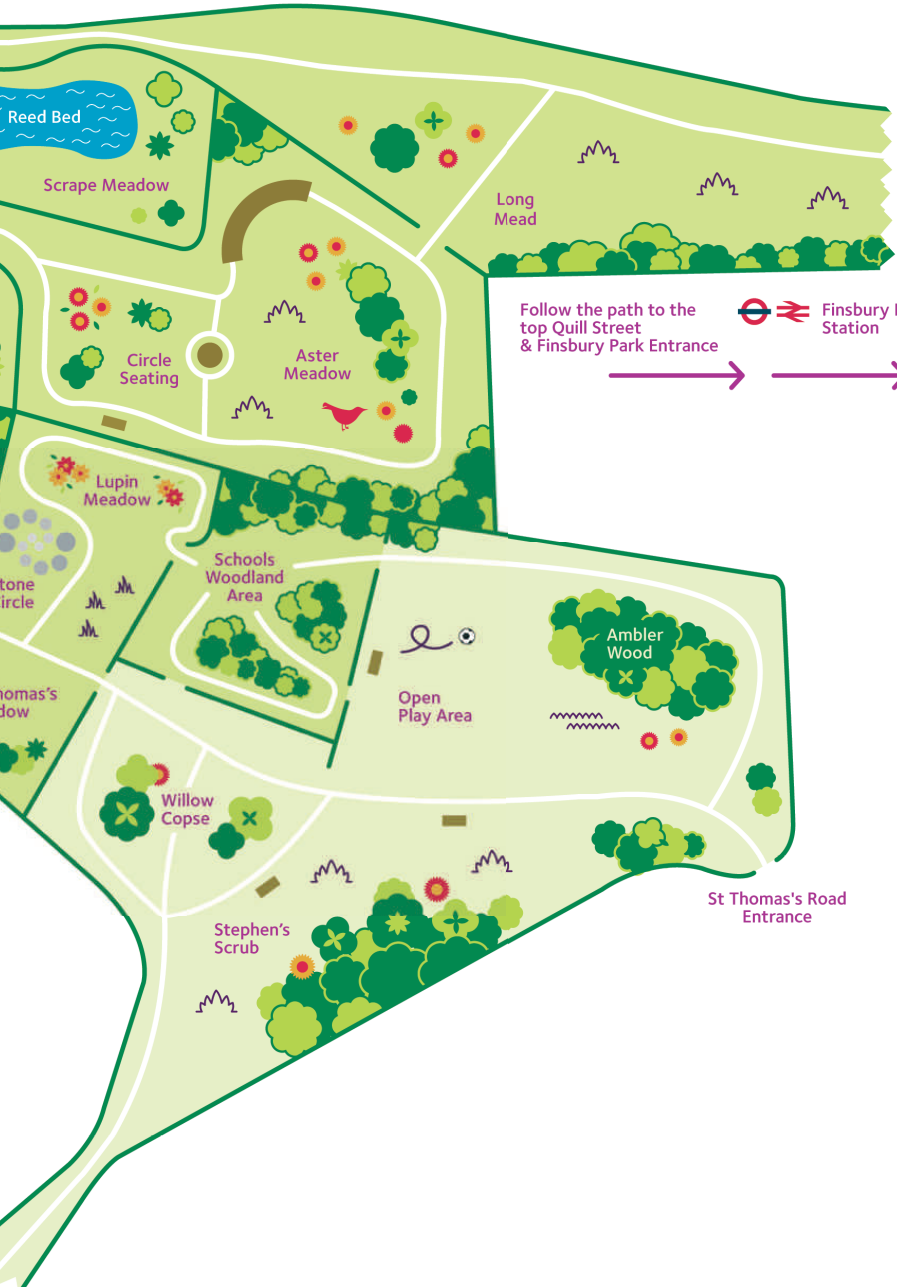
Map





Quill Street Entrance

Finsbury Park Entrance



↑
See above for detail

Follow the path to the top Quill Street & Finsbury Park Entrance



Finsbury Park Station



St Thomas's Road Entrance

