

WHITEHALL PARK AREA

RESIDENTS ASSOCIATION

Winter Warmer

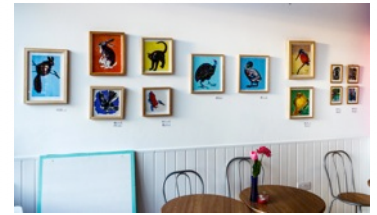
www.whpara.org.uk

info@whpara.org.uk

MUM'S THE WORD



You're probably aware that a new café called Mum Made has opened on Cressida Road, serving delicious-looking food and drinks from 7am until 5pm. The proprietor is Murat Nasif (pictured left) and, as you might have guessed, the food is all made by his mum. Murat also showcases the work of local artists on his walls, and this will change monthly. We haven't had the opportunity to sample his delights yet, so please send us any feedback if you've been there. We will be featuring the café on our website presently.



FAREWELL TO THE OLD ASHMOUNT

The school threw a farewell party on Saturday 17th November with live music from *Sashi And The Wild Beans* (pictured right), dancing from *JK Dancers*, food and drink galore and much merriment from staff, pupils and parents past and present. It was a bit sad to



witness the end of an era, but there was great



optimism for the future of the school in its new home at Crouch Hill. In the meantime there seems to be a move afoot by a private company to put forward a proposal for a free school on the site, to open in 2014. As we go to press little more is known, but there is

some information on their website at www.islingtonfreeprimary.co.uk, and of course there will be more information, news and views on the WHPARA website as we receive them.

COUNCILLOR AND POLICE FORUM REPORT



Around twenty people gathered in the welcoming surroundings of Hornsey Lane Estate Community Centre on 23rd October to debate with Councillors Foxsmith and Spall and PCSO Ben Nicholson. Each panellist gave a brief presentation and this was followed by a 90 minute Q&A. Hot topics included the proliferation of 'street furniture', especially the staggering number of 20mph road signs; concerns about the flouting of conservation area guidelines; crime and graffiti (including a recent flowering in Fitzwarren Gardens); some troubling planning proposals (e.g. the plan to build a house in the garden behind 32 Dresden Rd); concerns about a proposal that would appear to be

'sealing off' the Shakespeare roads; the seeming absence of a visible police presence on our streets; lumpy

roads and bumpy pavements; speeding traffic on Gresley Road and Whitehall Park; the continuing uncertainty about the Ashmount site and the security implications after the school closes.

PCSO Nicholson gave us the reassuring news that for a five week period in the summer there were no reported burglaries at all in the area and confirmed that the graffiti mentioned above had been removed within 48 hours. He reminded us of the new 101 number, which you should call if you see something suspicious, while the 999 number should be called in the case of emergency. He noted our concerns about the lack of police visibility in comparison with a year or so ago and about the non-enforcement of the 20mph speed limit, saying he would bring these up with the SNT.

Councillors Foxsmith and Spall reiterated the Council's commitment to conservation area preservation and enforcement and stressed that the most effective way of getting any concerns raised with the Council was through them. You can contact them by email or by attending their regular surgeries in Caxton House.

Cllrs Foxsmith & Constantinou	greg.foxsmith@islington.gov.uk lorraine.constantinou@islington.gov.uk	First Wednesday of month, 6.30pm Third Saturday of month, 11.00am
Cllr Spall	marian.spall@islington.gov.uk	Last Monday of month, 6.00pm

WALKABOUT 2



Another outcome of the Councillor Forum was a follow-up walkabout on November 9th, arranged by Greg Foxsmith, on which two WHPARA committee members were joined by representatives from LBI Conservation, Planning and Highways, along with Councillors Marion Spall and Lorraine Constantinou. Paul Taylor explained the necessity for all the 20mph signs, details of which are on our website on the Conservation page. The planning officers affirmed the Council's commitment to the enforcement of breaches in conservation and planning regulations, and in our walk around the area several issues were noted, including the proliferation of satellite dishes on the front of houses, which is contrary to conservation area regulations. The dishes pictured are all on one side of one street. We also discussed the siting of a community notice board, which had received strong support from the meeting.

ROOM AT THE INN

A major new development is on the table for Archway. There's a proposal to convert the existing Hamlyn House (the sad 60s block above Lloyds Bank and the Library) into a Premier Inn. You'll have a chance to see the 'innovative design approach' and to quiz the project team at a Public Exhibition in Hamlyn House, MacDonald Road entrance, on:



Tuesday 4 th December	5pm - 9pm
Wednesday 5 th December	5pm - 9pm



See our website for more info, picture and map.

IDENTITY THEFT

Identity theft, cons and scams seem to be on the increase generally, and especially in our area. One of our members shares her experience in the Your Shout section of our website, and we will shortly be adding an article on the website on what to look for and what to do. Let us know if you have any similar stories, and in the meantime, stay vigilant!

YOUR DAILY BREAD



Things are improving in Archway. Years after Emily's Home shop closed down the site has partially reopened with a branch of Greggs, the Newcastle family bakers that is now a much-loved nationwide chain. Jaffa Cake doughnut, anyone? There is, however, an application afoot to turn the other half of the building into yet



The fabled Jaffa Cake doughnut

another gambling facility. See our website for the low down.

WHITTINGTON & CAT

There's a planning application in the pipeline to demolish this historic pub and build flats in its place.

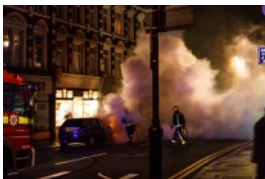
Anyone who has been there over the years will know it as one of the few 'unimproved' pubs left in the area, and will be familiar with the mummified cat that resides in a case in the back bar. The neighbouring Georgian building was demolished illegally last winter leaving an unsightly gap, and there have been some unrealistic ideas for building housing round the back of the pub. If you would like the pub to remain as it is then email your comments to the appropriate places, which you will find on the News page of our website.



WHERE'S THE FIRE?



In this case in Crouch End, last Sunday. One minute it was a normal Sunday evening at about five thirty, the next minute a wail of sirens and a ball of flame occurred seemingly simultaneously, followed by a very small but nonetheless impressive explosion. A car parked just beyond the clock tower provided a pyrotechnic display and a team of firefighters applied their skills to the situation in timely fashion. The scene was soon a fog of steam and acrid smoke, with curious spectators looming from the murk. Fortunately no one seems to have been hurt in the incident.



COMING EVENTS

CHRISTMAS CRACKER - Saturday 8th December, 2 - 5pm, St. Andrew's Church. In aid of the Winter Night Shelter, admission free.

AIR QUALITY MEETING - Wednesday 19th December at 7.30pm in Hargrave Hall, Hargrave Road, organised by Better Archway Forum (See Events and News on our website).

HLSI CHRISTMAS BAZAAR - Sunday 9th December 11am - 4pm. Free admission - festive fun for all the family. Highgate Literary and Scientific Institute, Pond Square.

If you have any items of local interest send us the details and we'll put them on the website.

www.whpara.org.uk

info@whpara.org.uk