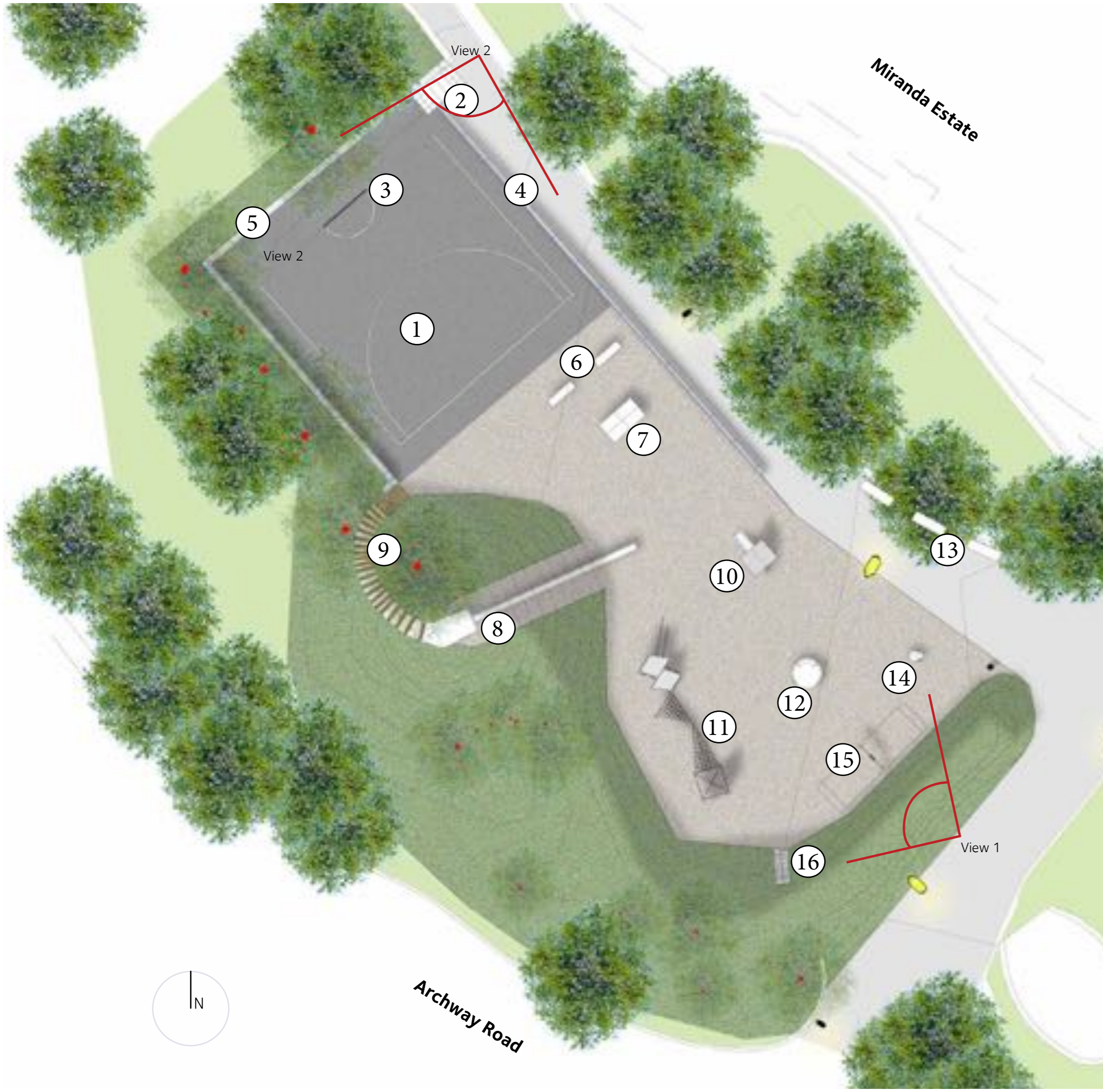


ARCHWAY PARK

Improvement Works



- | | | | |
|---|-----------------------------------|---|----------------------------------|
|  | Trees to be removed | ① | Sports pitch with new surface |
|  | Tree to be retained | ② | New access steps |
|  | Proposed new light column | ③ | New goal posts and hoop |
|  | Existing light column refurbished | ④ | New wall and fence |
|  | Proposed new mound with grass | ⑤ | Existing wall with new fence |
|  | Existing grass to be retained | ⑥ | New benches |
| | | ⑦ | New table tennis table |
| | | ⑧ | New 5m height slide |
| | | ⑨ | New access steps and handrail |
| | | ⑩ | New toddlers playhouse on stilts |
| | | ⑪ | New climbing frame |
| | | ⑫ | New accessible roundabout |
| | | ⑬ | New seats |
| | | ⑭ | New stroking cat sculpture |
| | | ⑮ | New toddler's swings |
| | | ⑯ | New ascent climb |

A public consultation event was held in March 2014 and December 2013 to discuss the new improvement works for Archway Park with the local residents:

The feedback we received on the new proposed design was very positive.

We are proposing to start the construction works in the Winter 2015/16 to deliver the following:

- New sports area with new fencing
- New children's play area
- New 5 metre high slide
- New seating
- New footpath and level access through the play area
- Additional lighting

View 1

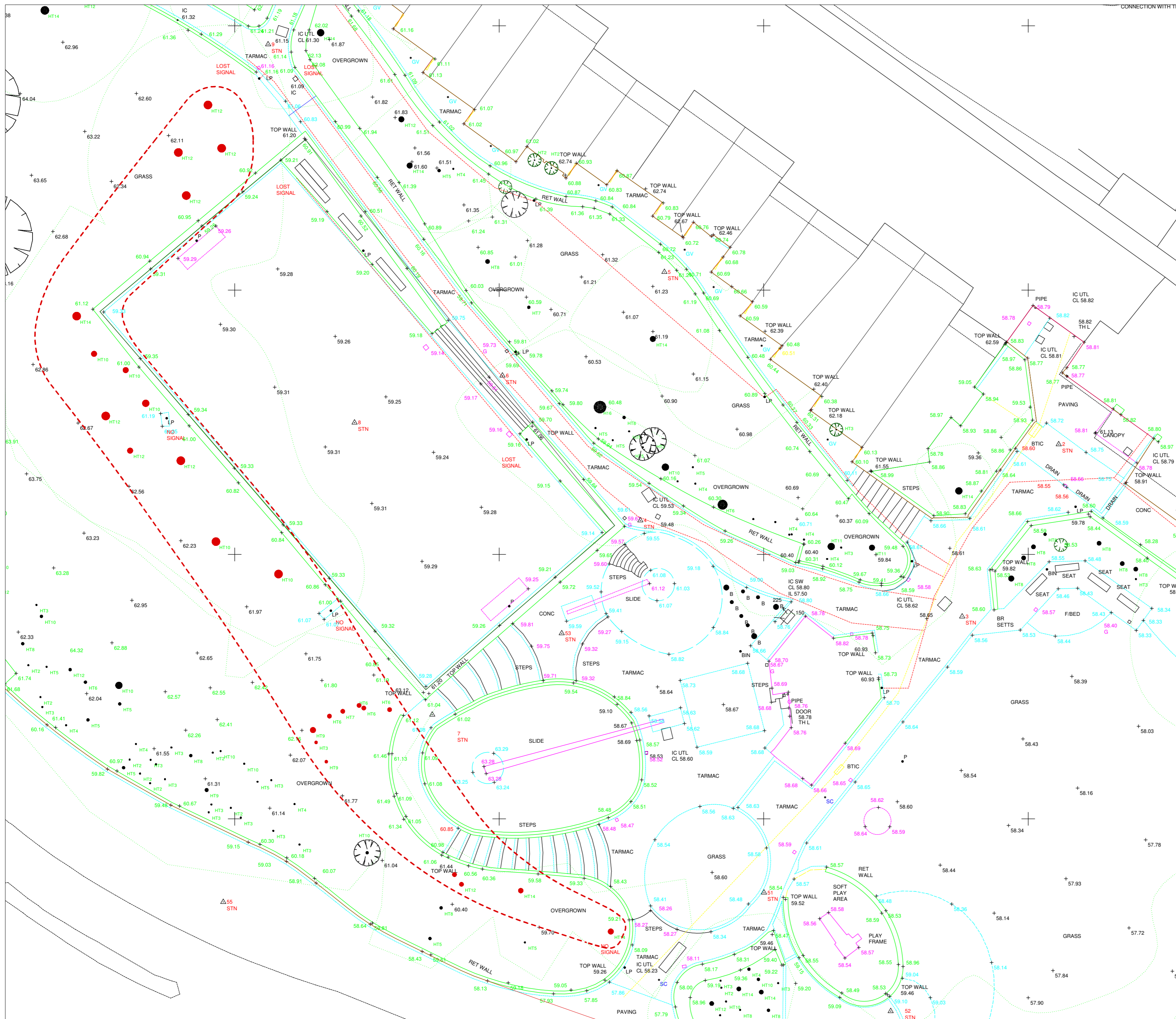


View 2



For further details about the project please contact:

Jenifer Baker
 Projects Officer
 Greenspace
 Tel: 020 7527 4604
 Email: jenifer.baker@islington.gov.uk



KEY



Trees to be removed

ARCHWAY PARK

Proposed trees to be removed

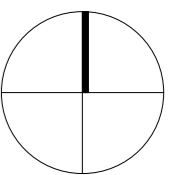
Date: 30 October 2014

Issue: Draft

For LBI sign off

Drawn by: BW

Checked by: MB



Scale: 1:200 @ A2

BURNS + NICE
 70 Cowcross Street
 London EC1M 6EJ
 T. 020 7253 0808 F. 020 7253 0909
 bn@burnsnice.com